

DATA ANALYSIS REVEALS FRAUD

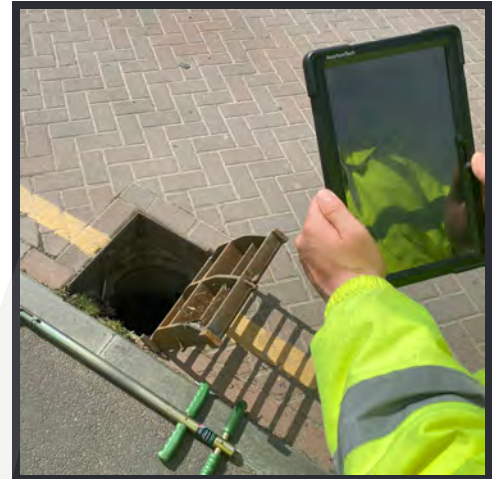
THE PROBLEM

Somerset County Council maintenance teams raised a support request with KaarbonTech when they believed that there was a glitch in the Gully SMART software.

They questioned whether the data uploaded into the KaarbonTech system could be incorrectly displaying.

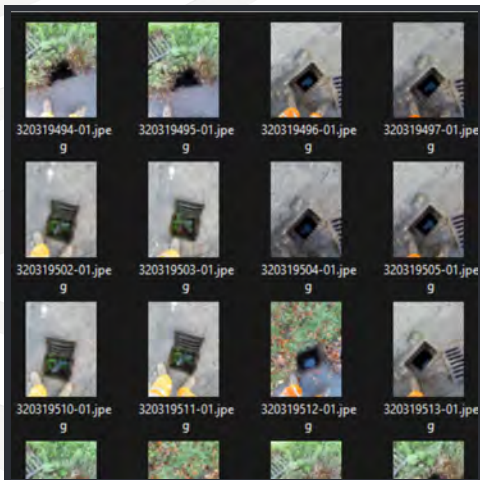
Their concern was that there was a full range of remarkably similar looking photos of gully grates in the programme, recorded as dealt with.

Fortunately, the data does not lie.



THE APPROACH

The KaarbonTech support team advised that it was very unlikely to be a system error but began its investigation on behalf of the Council. Notably, the photos were taken at different angles and from varying distances, indicating a deliberate attempt to confuse the reviewer. Further analysis highlighted that GPS locations were not in the vicinity of the site of the photos, some taken as far as 5km away. Clearly there was fraudulent activity taking place.



THE RESULT

KaarbonTech support is invaluable when concerns are raised over productivity. Using GPS data to establish the distances of gully locations against uploaded photographs, gave the evidence necessary to remove dishonest subcontractors from the service.

