

## CCTV REVOLUTIONISING DRAINAGE DATA

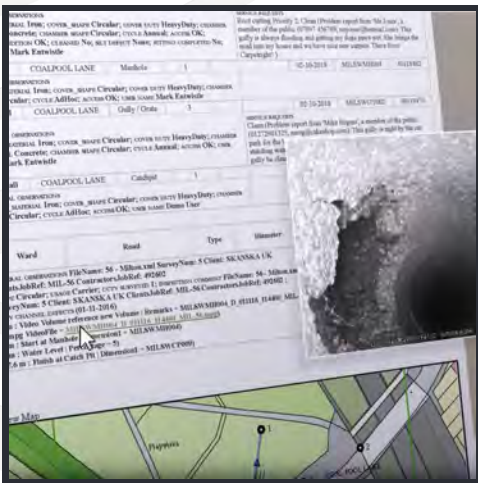
### THE PROBLEM

When using CCTV to investigate drainage problems, councils do not necessarily have the facility to link the new data to its existing records. In the event of an issue such as a collapsed drain or system blockage causing flooding, the ability to act quickly, to resolve the problem, is key. Inevitably someone has the task of searching through endless paperwork followed by on-site visits to identify the problem, which is unnecessary, time consuming and inefficient.



### THE APPROACH

KaarbonTech software was designed to fully integrate with other systems. To incorporate all drainage data sets, the pipeline surveys were collected in Wincan, imported to the asset in Gully SMART and stored in the asset history. We then correlated the length of the pipeline, known in our system, with the calibrated meterage in the survey, to display markers for each defect. Those markers were then used as bookmarks from which to play videos, extract photos or share defects with other systems.



### THE RESULT

With CCTV survey footage added to the existing data, access to the information was seamless. Office users of Gully SMART can easily extract stills of the defects from any survey footage. Users can produce and save photo rich, interactive pdf reports, with each section linked to the CCTV survey footage. Integrating CCTV technology with existing data, has vastly improved the accessibility of combined data. With this integration, councils and contractors can quickly and easily access drainage data, providing a clearer understanding of the condition of the network. This has revolutionised the way in which councils can work, enabling more efficient and effective maintenance of the drainage system.

